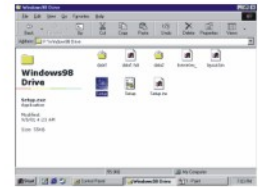




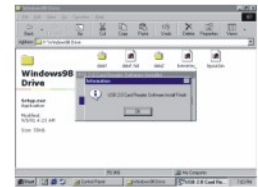
Targus

User's Manual

**USB 2.0 32-in-1 Memory
Card Reader/Writer
TGR-CRD25**



Click the "Next" button to continue.



Connect your card reader to the computer.
Click "OK", then "Next" to continue.

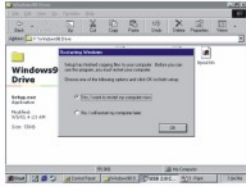
- Plug in the USB cable connector B to your Card Reader/Writer.
- Wait until Windows has installed the correct drivers.
- Start using your Card Reader/Writer.
- Insert your memory card into the appropriate slot of your card reader
- Open "My Computer" on your desktop, using the selected card as an extra disk.

Note: Please do not remove your card reader, or your memory card from the card reader before safely removing the card reader from your computer as that will damage your data.

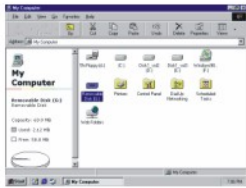
Attention

- In case your card reader is not detected, please check whether the card reader has been correctly connected to the USB port; please make sure the power supply from the USB upstream is high enough.
- In case your memory card does not fit into the card reader, please insert the card into the card reader with the arrow pointing upwards. Do not force the card into the card reader.
- Please do not open the card reader/writer by yourself. For assistance operating your card reader/writer please feel free to contact Targus Digital technical support:

Targus Digital
180 Maiden Lane
28th Floor
New York, NY 10038
E-mail: support@targusdigital.com



- Click "Finish" to complete the installation, then restart your computer.
- The following icons will appear in "My Computer"



Connection & Using Your Card Reader

- Plug in your USB cable connector A to a free USB port on your Laptop/PC first.

Packing Contents

- USB2.0 32-in-1 Memory Card Reader/Writer
- User's Manual
- USB Cable

System requirements

- Pentium II 300mhz (or higher)
- Windows Me/2000/XP/Vista Mac OS 9.0 and higher
- 1 available USB port

Features

- USB2.0 and USB 1.1 Backwards Compatibility.
- Supports high speed (480Mbps) and full speed (12Mbps) operations.
- No external power required. The card reader is powered by the USB connection cable.
- Fully Plug & Play and Hot Swapping support.
- Supports Windows Me/2000/XP/Vista/Mac OS 9.0 and higher.
- Compact and Light weight.
- Lower Power consumption.
- Saves the battery life on your digital camera.

Technical Specifications

- Our 32-in-1 card reader supports the following memory card formats:
 - CF/MD Slot : CF type I, CF type II, CF-ultra II, Micro Drive, CF -pro, CF-pro II, CF Extreme, CF Extreme III, CF-PSP II
 - MS Slot : MS, MS (Magic Gate), MS-Pro (Magic Gate), HS-MS-Pro (Magic Gate), MS-Duo, MS-Duo (Magic Gate), MS-Pro-Duo (Magic Gate), HS-MS-Pro-Duo (Magic Gate), *M2
 - SD/MMC Slot: SD, SD-ultra, SDHC, SD-Pro, SD-ultra II, MMC, HS-

MMC, RS-MMC , MMC 4.0, MMC-Pro,* Mini SD, *T-Flash

- SM Slot: XD Card, XD Card (M)
- * Card Adapter is required.
- Power: DC+5 volts supplied by USB port
- Op. temperature: 0°C to 70°C
- For Windows 2000/XP/Vista, and for Mac OS 9.0 and higher you do not need to install the driver. Your computer will automatically find the card reader when you plug in, but for Windows 98/Windows ME you need to install the driver.
- To install the driver, please go to www.Targusdigital.com and click on "Support and Download" at the top of the page. Please note that winzip is required to download the driver from our website.

Driver Installation

- Start up your computer.
- Go to www.Targusdigital.com, and click on "Support and Downloads" at the top of the page.
- Click on the link that matches the model number of your card reader.
- Click on the file "RTS5158.exe" to run the installation:



card25